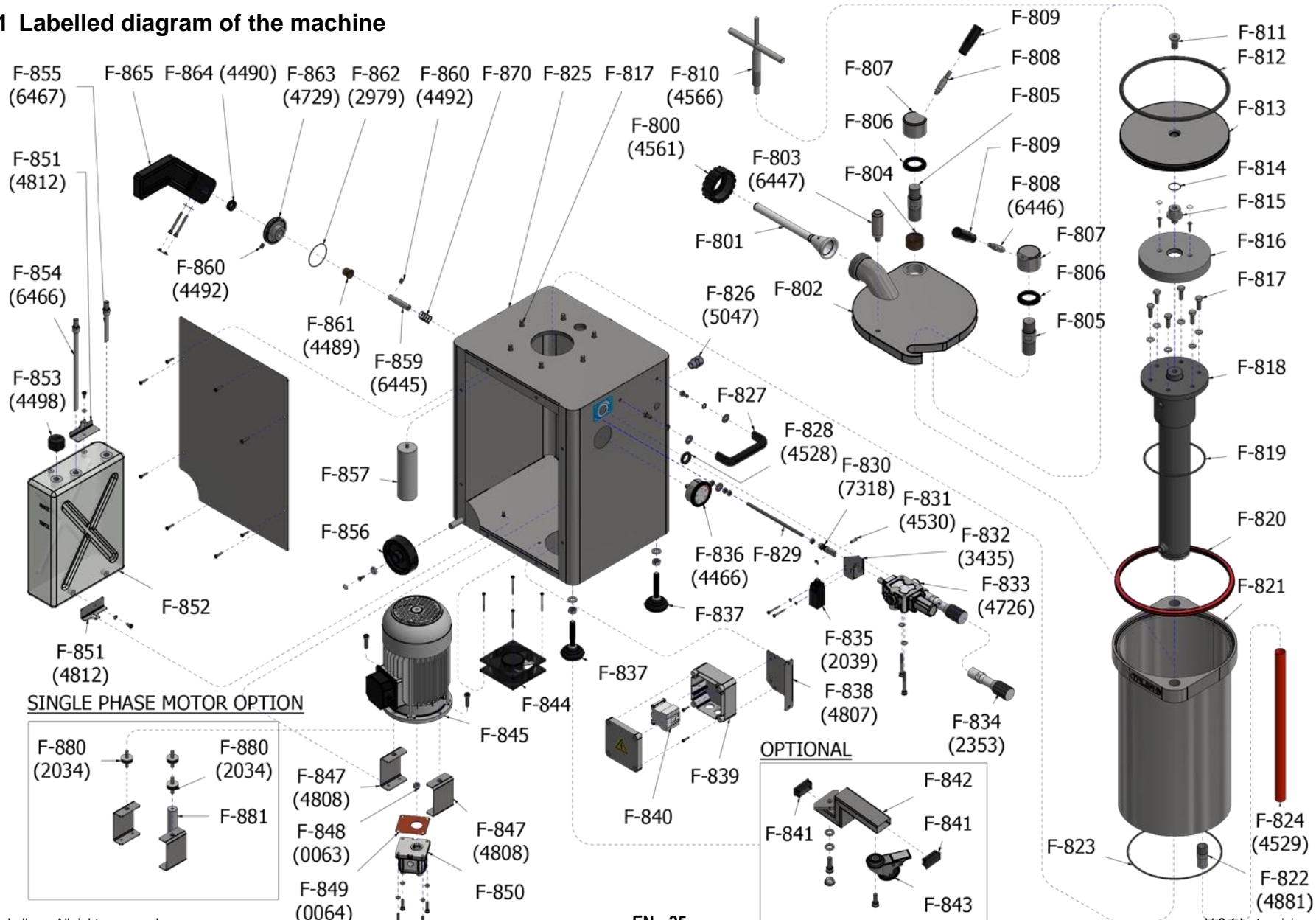


11. Labelled Diagram and Spare Parts List

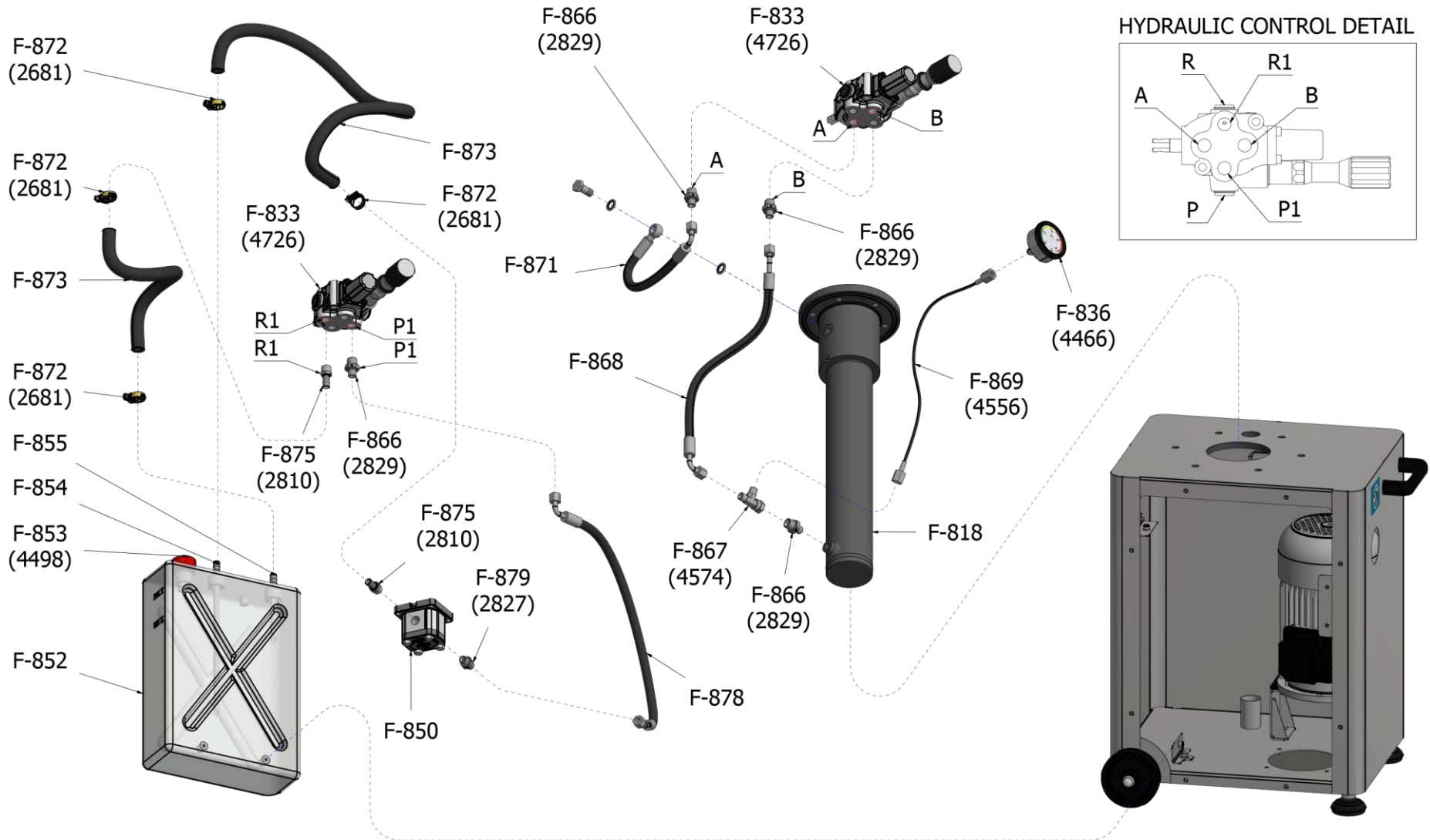
11.1 Labelled diagram of the machine



SINGLE PHASE MOTOR OPTION

OPTIONAL

Hydraulic system



11.2 Parts list

NOTE:

The 3-digit ID code shown in the labelled diagram are **not** valid for orders.

Please **order parts by using only the 4-digit code detailed in this parts list** and only through the authorized dealer who sold the machine. Please provide the machine's serial number with your order.

For some parts, additional technical and electrical drawing details will be needed.

The serial number and other relevant information can be found on the nameplate fixed to the machine body.

Enter the data of your machine here to have them on hand in case of an incident:

		E-46950 XIRIVELLA EUR: ESA46428025 Made in the EU			
Voltage	Frequency Hz	Phases	AC-Current		
kW (kVA)	HP (CV)	Amp.			
Model	Version	Elec. scheme			
Main wire mm ²	Manuf. year	Serial No.			
Before installing or operating this machine, please read its operating instructions manual thoroughly					

ID-code	F14s	F25s	F35s	F50s	Description
F-800	4561	4561	4561	4561	NOZZLE/HORN RETENTION NUT, BLACK
F-801	aux. table	aux. table	aux. table	aux. table	NOZZEL/HORN
F-802	6562	7861	6465	6462	S/S LID, WITHOUT ACCESSORIES
F-803	6447	6447	6447	6447	LID OPENING LEVER AISI303 (ALL STUFFERS/FILLERS FS)
F-804	4647	4647	4647	6456	BRAS BUSHING B11 LID
F-805	6450	6450	6450	6457	S/S BOLT, LID
F-806	6744	6744	6744	6745	BUSHING FOR LID LOCK NUT
F-807	6448	6448	6448	6455	NUT FOR LID LOCK AISI303
F-808	6446	6446	6446	6446	LEVER FOR LID LOCK NUT AISI303, W/O BLACK KNOB
F-809	4229	4229	4229	4230	KNOB BLACK THREAD
F-810	4566	4566	4566	4566	SPANNER/WRENCH, PISTON EXTRACTOR
F-811	4472	4472	4472	4460	CSK ALLEN SCREW, S/S DIN7991
F-812	5563	5564	5565	5566	PISTON GASKET, O-RING, RED SILICONE (1*PISTON)
F-813	6559	6452	6464	6459	PISTON, S/S, WITHOUT O-RING
F-814	4580	4497	4497	4587	O-RING, THREADED TIP PISTON
F-815	6560	6453	6453	6460	THREADED TIP HYDRAULIC CYLINDER BOLT AISI303
F-816	4640	4641	4641	4642	HOOD CLAMP, HYDRAULIC CYLINDER, GREY
F-817	4272	4272	4272	2637	S/S HEXAGONAL SCREW
F-818	4522	4534	4534	4524	HYDRAULIC CYLINDER
F-819	4579	4485	4485	4586	O-RING, HYDRAULIC CYLINDER
F-820	4500	4501	4502	4503	LID SEAL, RED
F-821	6558	6451	6463	6458	FIXED DOUGH BARREL
F-822	4881	4881	4881	4881	DEPOSIT DRAINAGE PIPE D.27 L.62 GAS 3/4"
F-823	4535	4484	4694	4536	O-RING, FLANGE DOUGH BARREL
F-824	4529	4529	4529	4529	TRANSPARENT FABRIC HOSE PVC D.32*25, DEPOSIT DRAIN
F-825	4581	4567	4567	4588	CABINET WITH ACCESSORIES
F-826	5047	5047	5047	5047	GROMMET, S-TEC 5308959 M20*1,5/13 POLIAMYDE, GREY
F-827	4645	4234	4234	4235	HANDLE M8
F-828	4528	4528	4528	4528	WALL PASS-THROUGH D.34/21,8*6MM EPDM BLACK 70 SH
F-829	6561	6454	6454	6461	THREADED ROD HYDRAULIC CONTROL M8 AISI304
F-830	4018	4018	4018	4018	INTERNAL FORK, HYDRAULIC CONTROL ACTIVATOR, S/S
F-831	4530	4530	4530	4530	CYLINDRICAL PIN, D.6*19,5 S/S
F-832	3435	3435	3435	3435	HOLDER, MICROSWITCH DISTRIBUTOR, S/S
F-833	4726	4726	4726	4726	HYDRAULIC CONTROL 102N8SA23X-340 WITH PRESSURE KNOB
F-834	2353	2353	2353	2353	EXTERNAL PRESSURE VALVE CONTROL ASSEMBLY M1670/861, BLACK KNOB
F-835	2039	2039	2039	2039	MICRO POSITION DETECTOR, COMEPI METAL WHEEL
F-836	4466	4466	4466	4466	PRESSURE GAUGE D.63, WIKA 213.53, 0-200 BAR, THREAD 1-4"
F-837	4113	4113	4113	4114	FOOT, STAINLESS STEEL
F-838	4807	4807	4807	4807	HOLDER ISOLATING BOX
F-839	0758	0758	0758	0758	ISOLATING BOX, LEGRAND 100*100*55 MM CODE 92138

ID-code	F14s	F25s	F35s	F50s	Description
F-839	4057	4057	4057	4057	ISOLATING BOX, IDE 162*116*76, POLYCARBONATE (H UL-CSA +110V)
F-840	aux. table	aux. table	aux. table	aux. table	CONTACTOR
F-841	4525	4525	4525	4526	CAP, KAPSTO, GPN270, SWIVEL CASTORS
F-842	4569	4569	4569	4696	EXTENSION SWIVEL CASTOR AISI304
F-843	4404	4404	4404	4405	SWIVEL CASTER BLACK/SS WITH BRAKE
F-844	aux. table	aux. table	aux. table	aux. table	FAN
F-845	aux. table	aux. table	aux. table	aux. table	MOTORS
F-846	-	-	-	4559	SILENTBLOCK F50 MOTOR 70*30*5MM EPDM BLACK
F-847	4808	4808	4808	4808	MOTOR MOUNTING BRACKET
F-848	0063	0063	0063	0063	MOTOR-PUMP COUPLING FOR FILLERS/STUFFERS
F-849	0064	0064	0064	0064	SEAL, VELLUMOID 1625-1 FOR PUMP TYPE L
F-850	4727	0037	0037	0011	GEAR PUMP
F-851	4812	4812	4812	4812	SUPPORT OIL RESERVOIR/CABINET
F-852	4531	4531	4531	4532	INTERNAL OIL RESERVOIR, POLIPROP. WHITE
F-853	4498	4498	4498	4498	OIL CAP, DEPRESSURIZED
F-854	6466	6466	6466	6466	OIL RETURN PIPE D.10 L.120 MM
F-855	6467	6467	6467	6467	OIL SUCTION PIPE D.10 L.270 MM
F-856	2290	2290	2290	4474	WHEEL, NYLON
F-857	aux. table	aux. table	aux. table	aux. table	CAPACITOR (SINGLE PHASE MOTOR)
F-859	6445	6445	6445	6445	ACTIVATOR KNEE LEVER D.15 L.70MM AISI303
F-860	4492	4492	4492	4492	BRASS BUSHING, B11 A-6-9-12
F-861	4489	4489	4489	4489	BRASS BUSHING, B11 B-15-20-20/25-3 WITH COLLAR
F-862	2979	2979	2979	2979	O-RING, INT. DIAM. 61*2
F-863	4729	4729	4729	4729	SUPPORT KNEE LEVER AISI304
F-864	4490	4490	4490	4490	GASKET, KNEE LEVER
F-865	4935	4935	4935	4936	KNEE LEVER, BLACK
F-866	2829	2829	2829	2829	HYDRAULIC UNION, SIMPLE, GE8LR 3/8" BSP
F-867	4574	4574	4574	4574	T JOINT EVL-08 (OUTLET CONTROL TO HYDRAULIC CYLINDER + GAUGE)
F-868	4554	4554	4554	4828	HOSE, R1T1/4 TL90HG8L-TL45HG8L, BOTTOM CYLIN-HYDR CONTROL
F-869	4556	4556	4556	4556	HOSE, PRESSURE GAUGE 1/4", LENGTH 500MM
F-870	4972	4972	4972	4972	COMPRESSION SPRING
F-871	4555	4555	4555	4557	HOSE, 290 MM R1T1/4 ESF1/4-TL90HG8L, TOP CYLIN-HYDRAULIC CONTROL
F-872	2681	2681	2681	2681	HOSE CLAMP, MIKALOR D.12-20/9 FOR HYDR. OIL DRAIN TUBE NH
F-873	2048	2048	2048	2048	RUBBER HOSE KLEMINE-20 BAR D.12*20
F-875	2810	2810	2810	2810	NOZZLE COVER, RUBBER 12 MALE THREAD 3/8" (DRAINING HOSE)
F-878	4553	4553	4553	4815	HOSE, R1T1/4 TL90HG8L-TL45HG8L (HYDRAULIC PUMP CONTROL)
F-879	2827	2827	2827	2827	HYDRAULIC UNION, SIMPLE, GE8LR 1/4" BSP
F-880	2034	2034	2034	2034	CYLINDRICAL RUBBER FOOT, BLACK, SINGLE PHASE MOTORS
F-881	6653	6653	6653	6653	MOTOR MOUNTING BRACKET, SINGLE PHASE FILLERS/STUFFERS

ID-code	NOZZLES / HORNS - all fillers / stuffers			
F-801	Material	Ø ext. mm	Ø int. mm	Tube length mm
4562	Translucent - standard -	14	10	160
4563	Translucent - standard -	20	16	196
4564	Translucent - standard -	30	26	196
7755	Stainless Steel	10	8	160
7094	Stainless Steel	12	10	160
7239	Stainless Steel	14	12	160
7240	Stainless Steel	18	15	200
7095	Stainless Steel	20	17	200
7241	Stainless Steel	25	22	200
7096	Stainless Steel	30	27	200
7358	Stainless Steel	38	35	200
7020	Stainless Steel	43	40	200
7756	Stainless Steel	10	8	240
7359	Stainless Steel	12	10	240
7360	Stainless Steel	14	12	240
7361	Stainless Steel	18	15	280
7362	Stainless Steel	20	17	280
7363	Stainless Steel	25	22	280
7364	Stainless Steel	30	27	280
7365	Stainless Steel	38	35	280
7366	Stainless Steel	43	40	280

ID-code	CONTACTORS, 3-phase motors			
F-840	F14s 0.55kW	F25s 1.1kW	F35s 1.1kW	F50s 1.8kW
3*400/380V-50Hz	2050	2050	2050	2050
3*230/220V-50Hz	2051	2051	2051	2727
3*208/220V-60Hz	2054	2054	2054	2439

ID-code	CONTACTORS, single phase motors			
F-840	F14s 0.75kW	F25s 1.3kW	F35s 1.1kW	F50s 1.8kW
1*230/220V-50Hz	2727	2727	2727	2725
1*220V-60Hz	2439	2439	2439	5045
1*110V-60Hz	3939	3939	3939	3939

ID-code	FANS (electric)			
F-844	F14s	F25s	F35s	F50s
3*400/380V-50Hz	-	-	-	4550
3*230/220V-50Hz	-	-	-	2019
1*230/220V-50Hz	2019	2019	2019	2019
3*208/220V-60Hz	2019	2019	2019	2019
1*220V-60Hz	2019	2019	2019	2019
1*110V-60Hz	2020	2020	2020	2020

ID-code	3-phase MOTORS			
F-845	F14s 0.55kW	F25s 1.1kW	F35s 1.1kW	F50s 1.8kW
3*400/380 & 230/220V-50Hz	0055	0030	0030	0853
3*208/220V-60Hz	3333	0032	0032	0857

ID-code	Single phase MOTORS			
F-845	F14s 0.75kW	F25s 1.3kW	F35s 1.1kW	F50s 1.8kW
1*230/220V-50Hz	0058	0035	0035	0854
1*220V-60Hz	3334	2572	2572	0856
1*110V-60Hz	4572	3937	3937	4573

ID-code	Single phase CAPACITORS			
F-857	F14s 0.75kW	F25s 1.3kW	F35s 1.1kW	F50s 1.8kW
1*230/220V-50Hz	2651	2652	2652	2653
1*220V-60Hz	2651	2652	2652	2653
1*110V-60Hz	2x4047	2x4821 +1x4822	2x4821 +1x4822	3x4823