

**REX**  
TECHNOLOGIE

INNOVATION & PERFECTION



THE LATEST GENERATION OF VACUUM FILLERS

# NEW DIMENSIONS OF THE HIGHEST STANDARD



## **REX presents new dimensions - vacuum filling machines of the highest standard**

The latest REX vacuum filling machines, series 300, 500 and 700 are the result of experience gained over more than 30 years in development and production, making it possible to satisfy a wide range of individual requirements. The use of virtually standardised REX components, with their respective performance capabilities, offers the best technical and economic solution. The new series replaces the well proved and tested REX vacuum filling programme and is the innovative pathfinder for machine processing of various types of liquid or viscous substances.



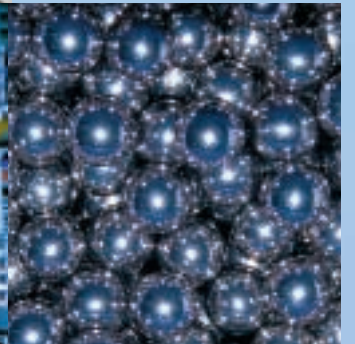
## **Services rendered on a permanent basis**

Qualified assistance in the choice of the right machine to suit individual requirements, setting up operation and presentation in the works, regular maintenance and prompt customer service are all part of successful and continuing cooperation.

The services we offer are supported and complemented by our contractors.







RVF 3000



## Operation made easy to understand

The RVF 327 is designed for small and middle-sized enterprises with frequently changing varieties and average forcemeat quantities.

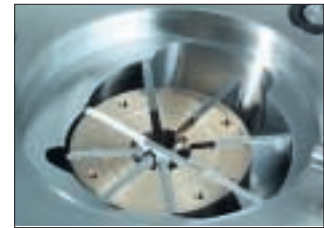
Reliable, quick and easy cleaning, reduction of leftovers and low energy costs are the main features of the RVF 327.

The vane cell feed system made of wear resistant stainless steel guarantees durability as well as best product quality. It guarantees gentle transport of all filling substances and minimal air pockets in the forcemeat.

The touch screen simplifies operation and has been designed according to industrial requirements. The standard clipper socket permits control of various clipper or additional machines when required. Optional fold-away hoppers with 90 and 150 litre content are available.

Naturally, it is always possible to attach a rotating or fixed holding device to the RVF 327 in order to facilitate the linking of synthetic or natural casing.

**In-feed RVF 327**



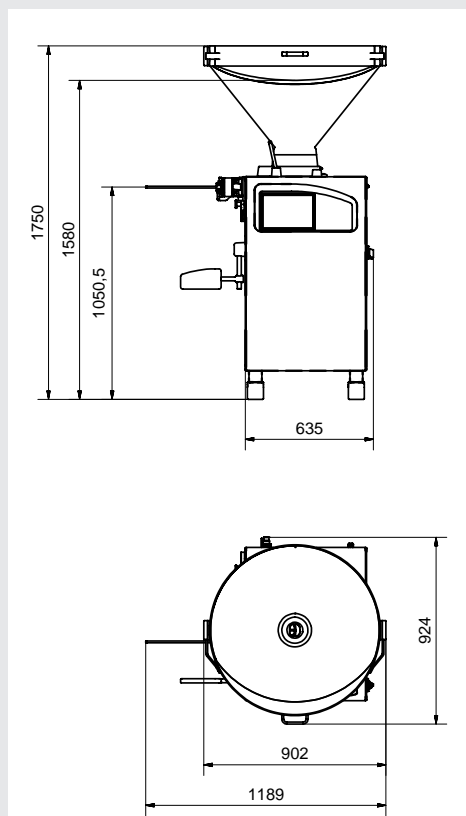
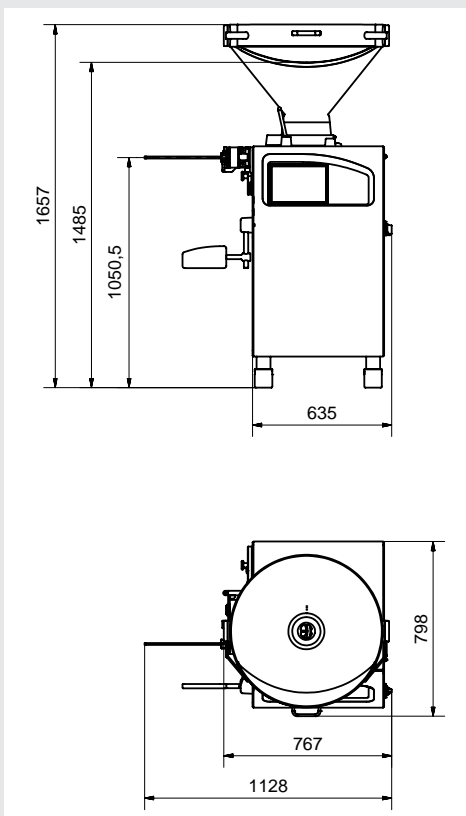
**Holding device 320/400**



**Holding device fixed**



## ■ Scale drawing RVF 327/90, 150 litre fold-away hopper





RVF 500



## REX Perfection in Development and Technology

The RVF 500 line is designed for the requirements of meat processing industries, as well as middle-sized and larger often highly specialised enterprises. Generally speaking the line stands for:

- high performance density
- exact portioning
- easy change of variety
- multifunctional supplementary possibilities in combination with various clipper appliances and upstream attachments.
- high standard of hygiene and easy cleaning.

Machine casing is self-supporting and made entirely of stainless steel, thus the entire construction surface is smooth and manufacture complies with the highest technical standards. The vane cell feed system is the same size and has the same characteristics as the RVF 700. The smaller model of the RVF 500 can also be delivered in combination with a conventional forcemeat in-feed.

There is a wide choice of hoppers in various sizes to suit each enterprise. The following hoppers for the RVF 500 are available:

- 90 litre hopper
- 150 litre hopper
- 300 litre hopper fold-away

Hopper: 90 litre



Hopper: 150 litre



Fold-away Hopper: 300 litre



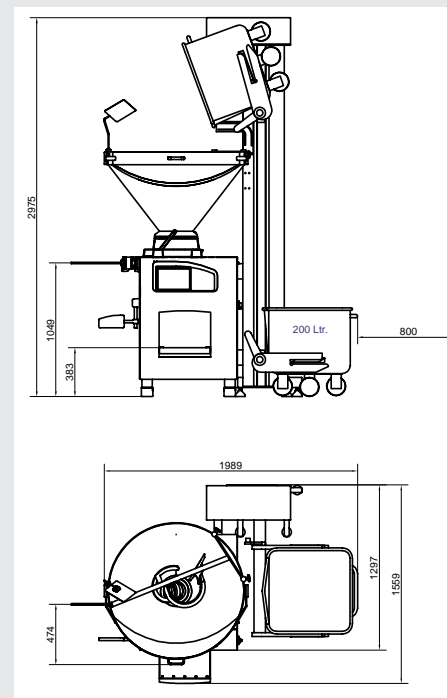
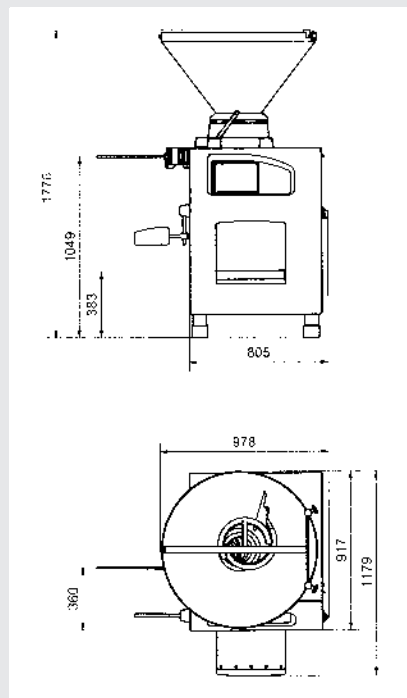
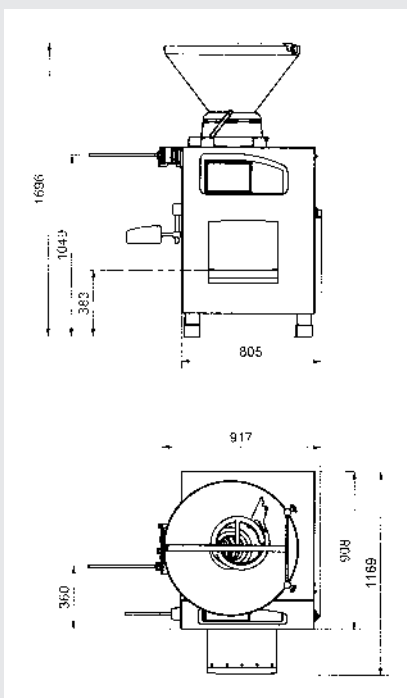
Blind gate valve drum



Gate valve drum 16



### ■ Scale drawings of RVF 500 with 90, 150 i.e. 300 litre hopper



RVF 700





## Innovation and Perfection set new standards

The RVF 700 line, like the RVF 500 line, is designed for the requirements of meat processing industries, as well as middle-sized and larger often highly specialised enterprises. Like the RVF 500 this line also stands for:

- high performance density
- exact portioning
- easy change of variety
- multifunctional supplementary possibilities in combination with various clipper appliances and upstream attachments.
- high standard of hygiene and easy cleaning.
- self-supporting machine casing made entirely of stainless steel

The reinforced in-feed devices guarantee exact portioning with maximum service life. The vane cell feed system guarantees gentle transport of all filling substances, with no squashing, pressing or tearing. Additionally the in-feed is designed to guarantee a precise cutting surface and minimal amount of air pockets in the forcemeat. The in-feeds are available with 16, 14, 12 or alternatively with blind gate valve.

The RVF 700 features the integrated elevator swing arm in-feed and may at any time be equipped with a drive-unit for the REX-filling-shredder.

**Holding device 320/400**



**Holding device fixed**



**Straight filling tube**



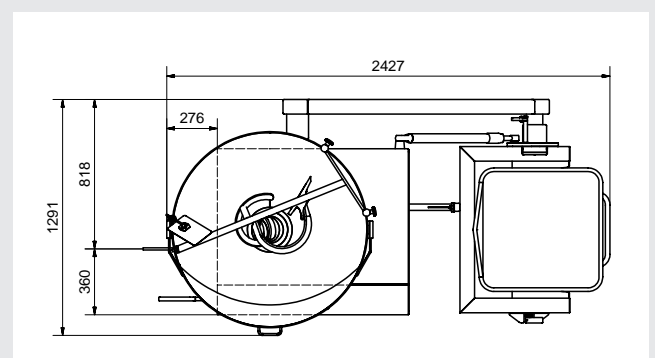
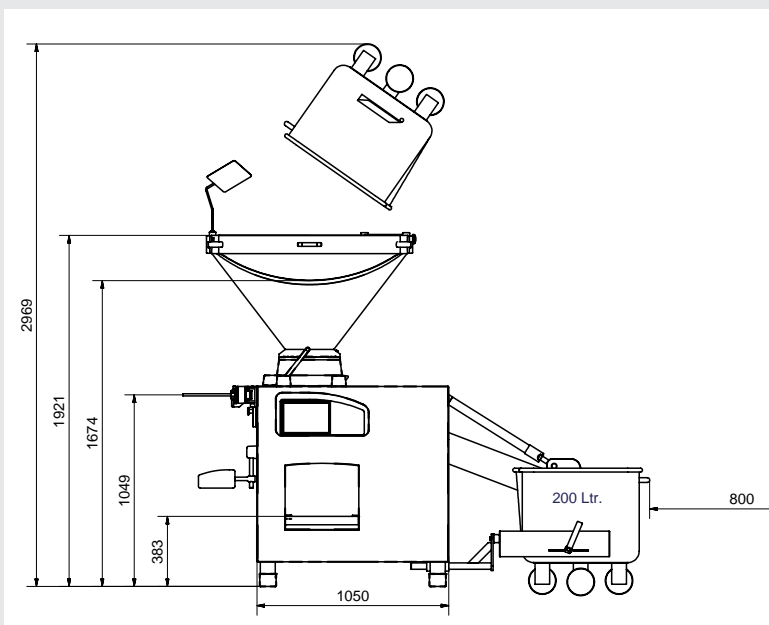
**Blind gate valve drum**



**Gate valve drum 16**



- **Scale drawing RVF 700. A fold-away hopper with 300 litres is available**



# DETAILS - THE FUNDAMENTAL BACKGROUND



The REX-servo-drive, used effectively in all Rex-machines for the last 15 years, has been improved in performance by the latest drive concept, standing for:

- practically maintenance free for many years
- exact portioning
- low energy consumption
- smooth and quiet operation



## Advanced control technology - simple operation for economic production

The fully integrated REX touch-screen is installed in all series and offers the user the easiest operating and adjustment possibilities. All set values such as weight, speed etc. are permanently screened and can be adjusted by the operator at any time. This ensures

optimal efficiency. The operator is kept up to date on routine maintenance by integrated maintenance interval indicators. The built-in modem i.e. Ethernet interfaces permit direct communication between machine, internal plant facilities and external service. Thus service and program data can be exported or imported. The controls allow activation of metal detectors for metal screening at any time. Moreover the controls support all common European languages as also far-eastern typesets.



## Fixed holding device

This holding device can be simply attached to the filling device in combination with the linking transmission and offers excellent results for linking all sorts of natural casings.



## Holding devices 320 and 400

The holding devices can be simply inserted in the connector of the linking transmission on the filling device and removed or swung sideways for cleaning after production. They ensure excellent performance for linking of all artificial and collagen casings as well as all sorts of natural casings. The correct type of device is chosen prior to purchase according to individual requirements for the existing



## Forcemeat cutter

The pneumatic forcemeat cutter can be easily attached to the evacuation of the filling device. It is ideally suited to cutting filling substances (Çevapcici....). The exact size of each portion is specified

by the filling device. Various sized filling tubes can be attached if required.



# TECHNICAL DATA OVERVIEW

## RVF 327

Type	RVF 327
filling capacity	2.700 kg/h
max. filling pressure	40 bar
portioning and linking speed at	
10 g	approx. 700 portions
20 g	approx. 400 portions
40 g	approx. 350 portions
100 g	approx. 300 portions
200 g	approx. 200 portions
no. of portions depends on linking time and filling intervals	
hopper types	90, 150 litre
weight	450 kg
power rating	5 kw
clipper connection	standard
elevator	no

## RVF 540 | 550 | 560

Type	RVF 540	RVF 550	RVF 560
filling capacity	4.000 kg/h	5.000 kg/h	6.000 kg/h
max. filling pressure	35 bar	45 bar	45 bar
portioning and linking speed at			
10 g	approx. 1000 portions	approx. 1200 portions	approx. 1200 portions
20 g	approx. 600 portions	approx. 800 portions	approx. 800 portions
40 g	approx. 450 portions	approx. 650 portions	approx. 650 portions
100 g	approx. 300 portions	approx. 500 portions	approx. 500 portions
200 g	approx. 250 portions	approx. 350 portions	approx. 350 portions
no. of portions depends on linking time and filling intervals			
hopper types	90, 150, 300 litre	90, 150, 300 litre	90, 150, 300 litre
weight	600 kg	700 kg	800 kg
power rating	8 kw	8 kw	11 kw
clipper connection	standard	standard	standard
elevator	optional forcemeat in-feed	optional forcemeat in-feed	optional forcemeat in-feed

## RVF 736 | 750 | 760

Type	RVF 736	RVF 750	RVF 760
filling capacity	3.600 kg/h	5.000 kg/h	6.000 kg/h
max. filling pressure	70 bar	45 bar	45 bar
portioning and linking speed at			
10 g	approx. 1000 portions	approx. 1200 portions	approx. 1200 portions
20 g	approx. 600 portions	approx. 800 portions	approx. 800 portions
40 g	approx. 450 portions	approx. 650 portions	approx. 650 portions
100 g	approx. 300 portions	approx. 500 portions	approx. 500 portions
200 g	approx. 250 portions	approx. 350 portions	approx. 350 portions
no. of portions depends on linking time and filling intervals			
hopper types	300 litre	300 litre	300 litre
weight	1.100 kg	1.000 kg	1.100 kg
power rating	11 kw	8 kw	11 kw
clipper connection	standard	standard	standard
elevator	optional swing-arm	optional swing-arm	optional swing-arm



REX Technologie Ges.m.b.H.  
Enzersberg 154 • A-5303 Thalgau  
Telefon +43(0)62 35 - 6116-0 • Fax +43(0)62 35-65 29  
Mail [scro@rex-austria.com](mailto:scro@rex-austria.com)  
[www.rex-austria.com](http://www.rex-austria.com)